



TRAFFORD
COUNCIL

Pennine Care 
NHS Foundation Trust

Update on Integration of Health and Social Care

October 2017

27/09/17 DM

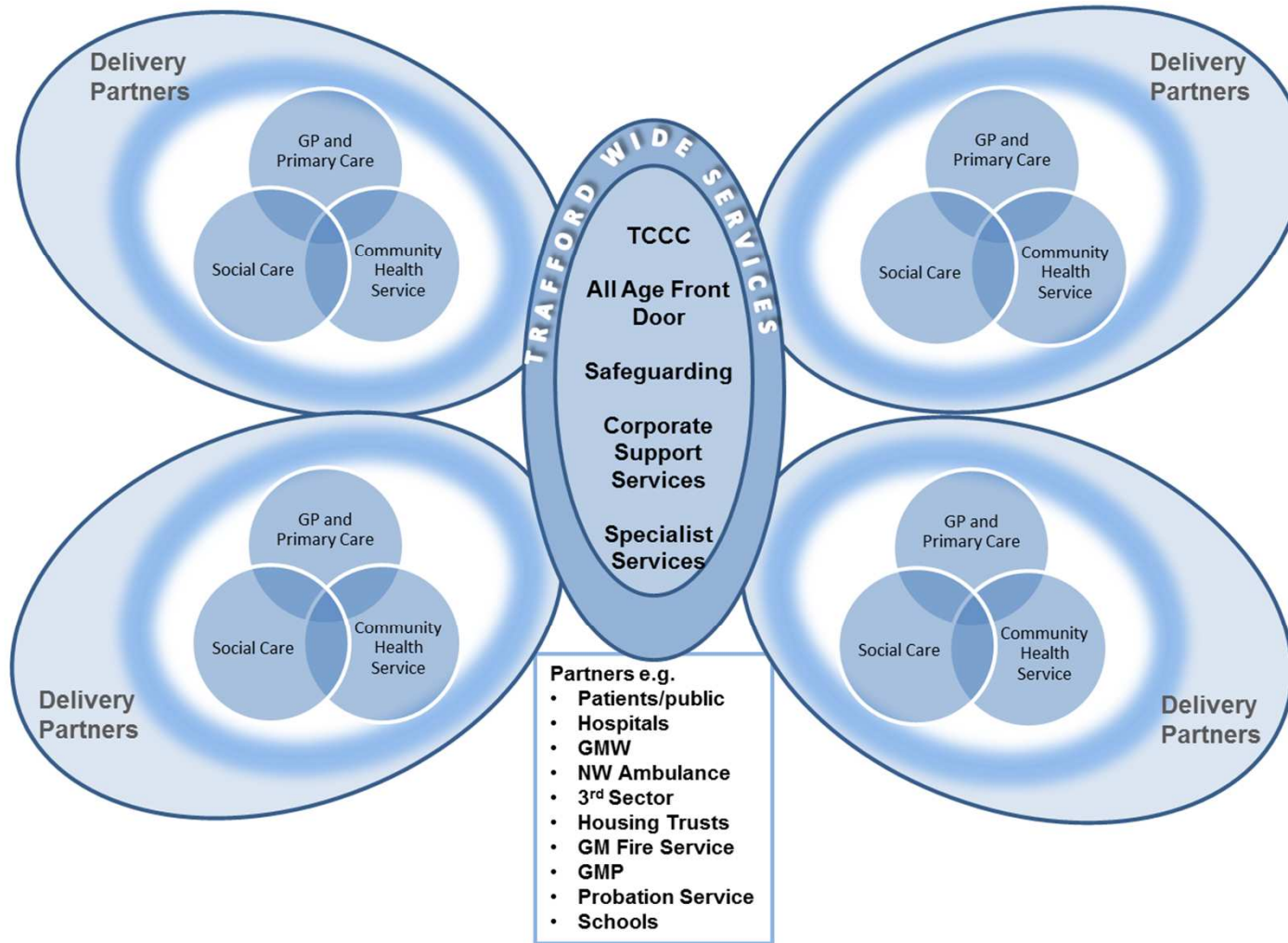
Working together
LIVING WELL

 @PennineCareNHS

 www.penninecare.nhs.uk

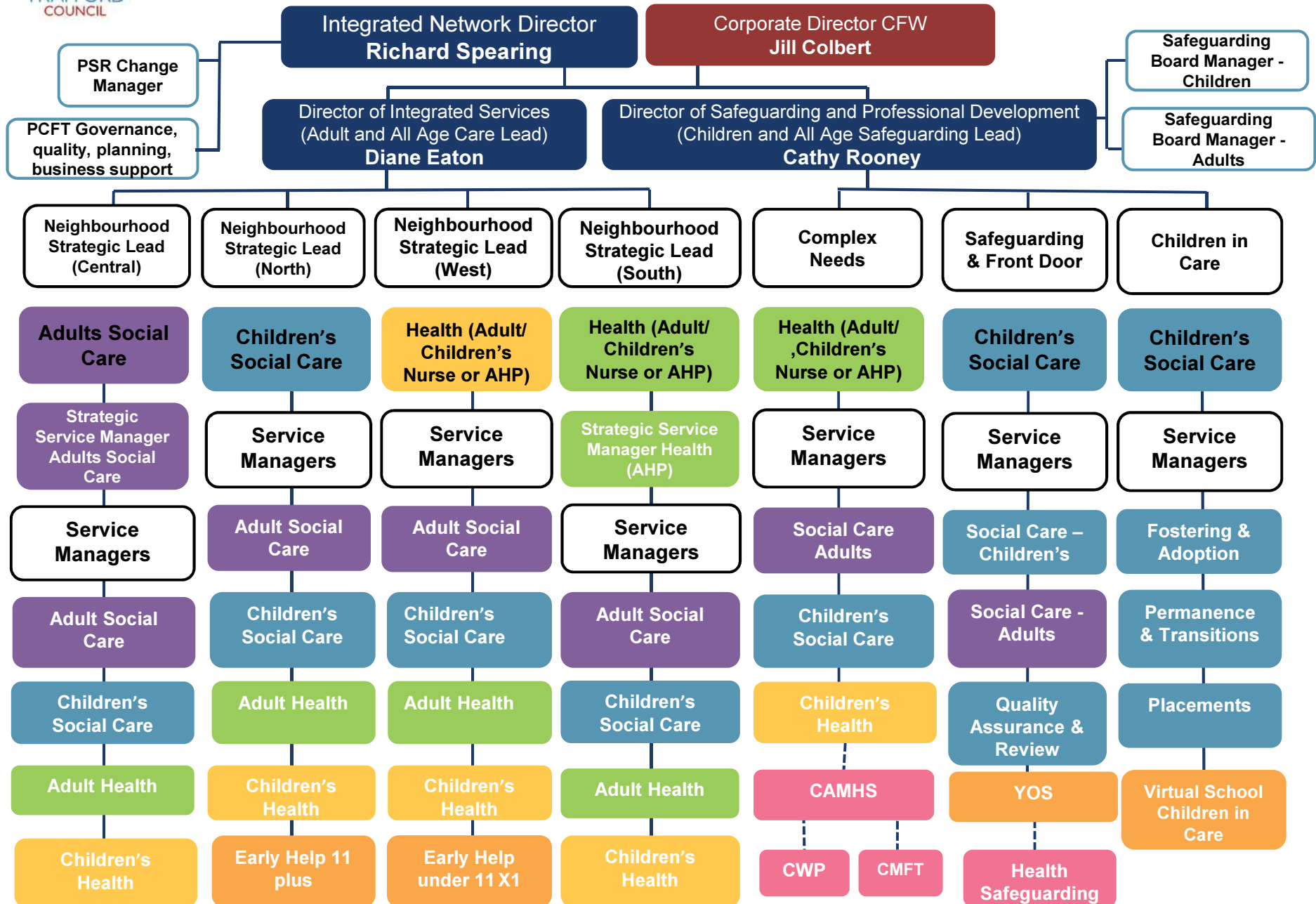


All Age Model





Trafford All Age Integration Management Structure



Directors



Integrated Network Director
Richard Spearing

Richard has day-to-day responsibility for all the services in Trafford's integrated structure. He makes sure the services support the strategies and responsibilities of both Pennine Care and Trafford Council. He works closely with colleagues in both organisations to enable this to happen.



Corporate Director, Children, Families and Wellbeing (Trafford Council)
Jill Colbert

Jill has the overall responsibility for children and adult social care services, including school facing services, as well as holding overall responsibility for public health. She works closely with Richard, Diane and Cathy to ensure the Council and its partners are providing high quality services to meet the needs of vulnerable families. Jill sits as part of the Council's corporate leadership team and reports to Theresa Grant.



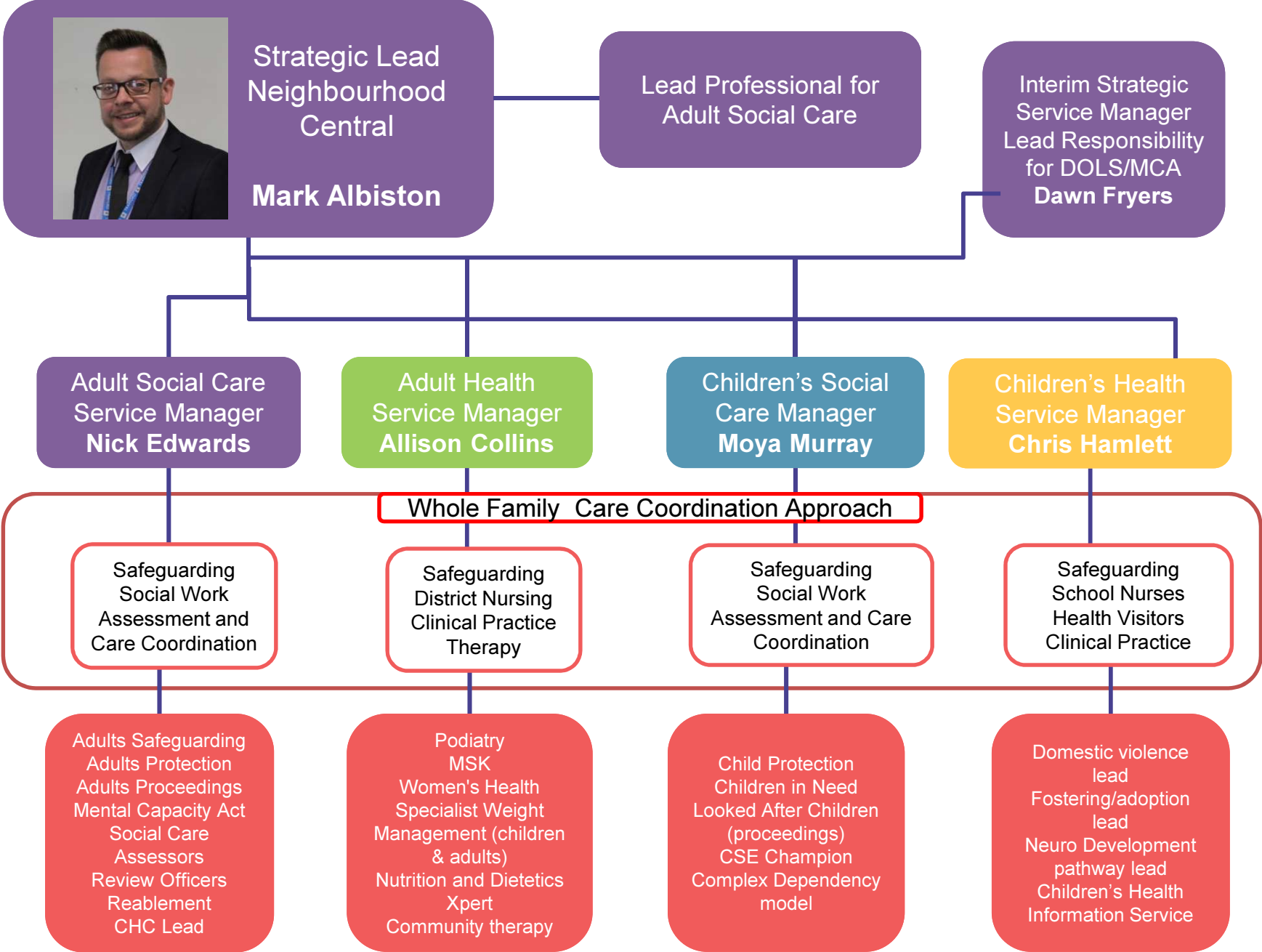
Director of Integrated Services (Adult and All Age Care Lead)
Diane Eaton

Diane is responsible for the delivery of All Age Integrated Care in the neighbourhood model, ensuring a holistic response is delivered as close to home as possible to meet people's needs. Diane believes everyone has a right to be with their family and to live a full, active and independent life.



Director of Safeguarding and Professional Development (Children and All Age Safeguarding Lead)
Cathy Rooney

Cathy is responsible for ensuring robust and high quality safeguarding practices across all services. She is our complex needs and children's services lead, as well as the Agency Decision Maker for Children's Social Care. Cathy ensures all professionals within our service have the right support, guidance and leadership to allow them to perform to the highest standard.



Strategic Lead
Neighbourhood
Central
Mark Albiston

Lead Professional for
Adult Social Care

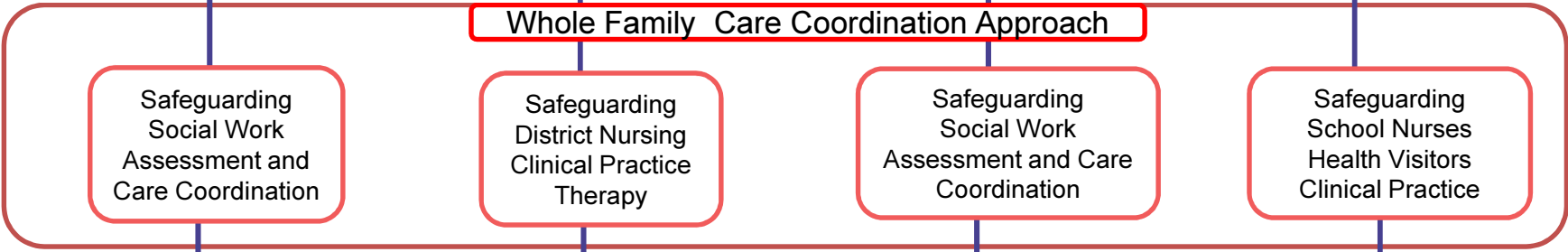
Interim Strategic
Service Manager
Lead Responsibility
for DOLS/MCA
Dawn Fryers

Adult Social Care
Service Manager
Nick Edwards

Adult Health
Service Manager
Allison Collins

Children's Social
Care Manager
Moya Murray

Children's Health
Service Manager
Chris Hamlett



Safeguarding
Social Work
Assessment and
Care Coordination

Safeguarding
District Nursing
Clinical Practice
Therapy

Safeguarding
Social Work
Assessment and Care
Coordination

Safeguarding
School Nurses
Health Visitors
Clinical Practice

Adults Safeguarding
Adults Protection
Adults Proceedings
Mental Capacity Act
Social Care
Assessors
Review Officers
Reablement
CHC Lead

Podiatry
MSK
Women's Health
Specialist Weight
Management (children
& adults)
Nutrition and Dietetics
Xpert
Community therapy

Child Protection
Children in Need
Looked After Children
(proceedings)
CSE Champion
Complex Dependency
model

Domestic violence
lead
Fostering/adoption
lead
Neuro Development
pathway lead
Children's Health
Information Service



TRAFFORD
COUNCIL

Pennine Care 
NHS Foundation Trust

Professional Leadership

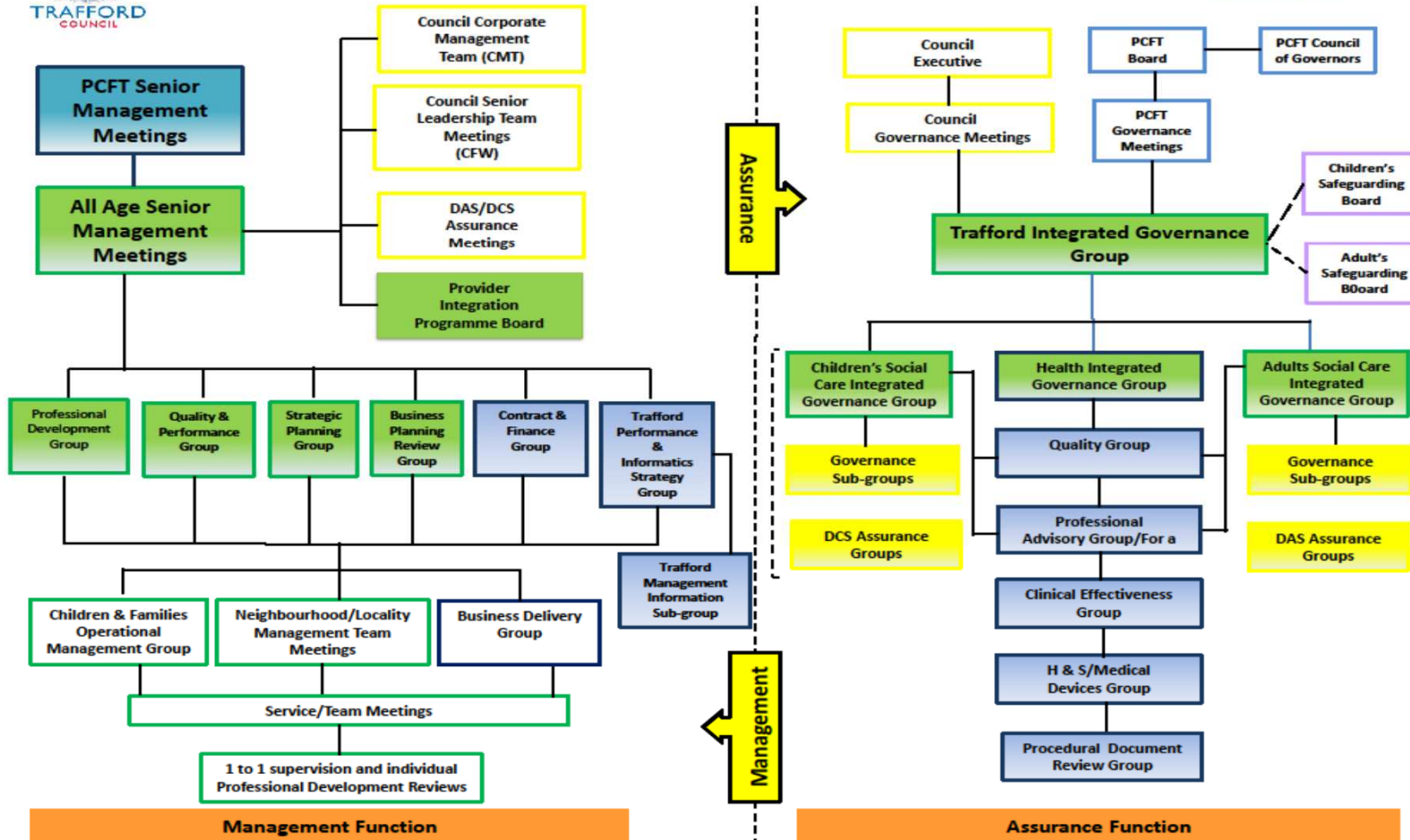
- Adult Social Care
- Children's Social Care
- Adult Nursing
- Allied Health Professionals
- Children's Nursing



Shared Governance and Accountability



Trafford All Age Integrated Health & Social Care Governance & Management Overview





Joint Working 17/18

- **Adults:**
 - Intermediate Care: Ascot House
 - CEC and rapid response carers
 - Integrated discharge team manager
 - Patient Flow manager
- **Children**
 - Vulnerable parents pathway
 - Education Health and Care Planning
 - MEN Incident Response
- **Quality Strategy and Forward Plan**
- **Estates**
- **Business Admin Insight**
- **Self Management / 3 conversations**



Transformation Fund Bid

- Award of £22m made on 13 October 2017 over three years
- Implementation underway:
- Recruitment of project managers
- Programme Board to be established
- New Models of Primary Care (NMoPC)
- Primary care organisation
- Multi-disciplinary teams
- Care Complex – strategic outline case approved



"Together with residents we will support and improve the health and wellbeing of the people of Trafford"
New models of care

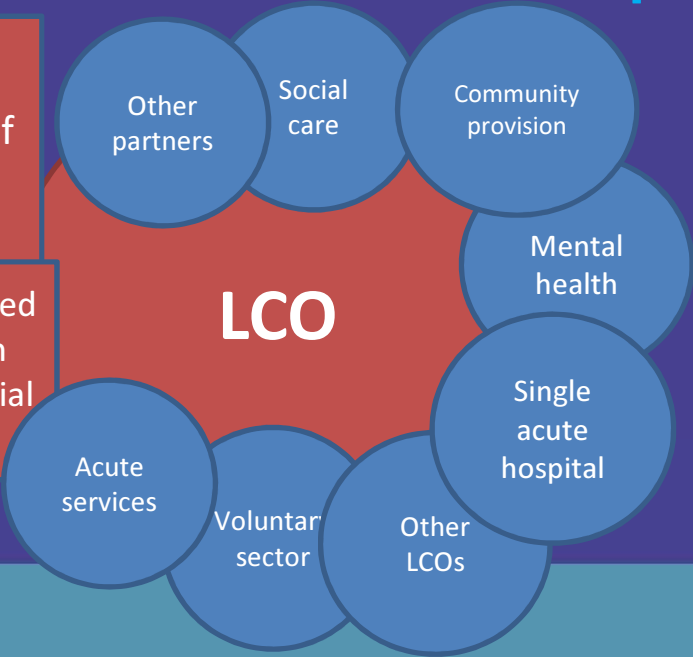
Integrated organisation (TCCG and TMBC)
Intelligent strategic commissioning

TCC

Care complex

New models of primary care

Integrated health and social care



Working together
LIVING WELL

- Pre-requisites
- IT
- Experience & engagement
- Workforce
- Estates
- Finance including transitional funding
- OD and values



Next Steps

- Review partnership in light of LCO developments
- Neighbourhood Multi disciplinary teams with primary care
- Further development of intermediate tier including Ascot House
- Transformation Programmes
 - Urgent care model
 - Early help